

R2RDR

Q4 2022

News & Updates

WISCONSIN NATURE CONSERVANCY 10.12.22

Plum Creek & Lower Kickapoo River

Mississippi River conservancy

Great Lakes reef restoration

River restoration in Milwaukee & **Reflow**, changing school playgrounds and storm water diversion

Invest in Nature

NCSgo

Google Docs interface showing a presentation slide titled "WISCONSIN NATURE CONSERVANCY 10.12.22". The slide content includes:

- Plum Creek & Lower Kickapoo River
- Mississippi River conservancy
- Great Lakes reef restoration
- River restoration in Milwaukee & Reflow, changing school playgrounds and storm water diversion
- Invest in Nature
- NCSgo

The interface includes a top navigation bar with "File", "Edit", "View", "Insert", "Format", "Slide", "Arrange", "Tools", "Add-ons", and "Help". A toolbar with various editing tools is visible below the navigation bar. A sidebar on the left shows a slide navigation pane with three slides. A Zoom Webinar window is overlaid on the right side of the screen, displaying a video feed of Hannah Butkiewicz and two maps of Wisconsin. The Zoom window includes controls for "Recording", "Audio Settings", "Q&A", "More", and "Leave". The system tray at the bottom shows the date "10/12/2022" and time "2:23 PM".

WISCONSIN NATURE CONSERVANCY 10.12.22

Plum Creek & Lower Kickapoo River

Mississippi River conservancy

Great Lakes reef restoration

River restoration in Milwaukee & Reflow, changing school playgrounds and storm water diversion

Invest in Nature

NCSgo

Click to add speaker notes

Explore

Import theme

Slate



Plum Creek © Samuel Li

GOLDEN SANDS PROJECT MANAGER

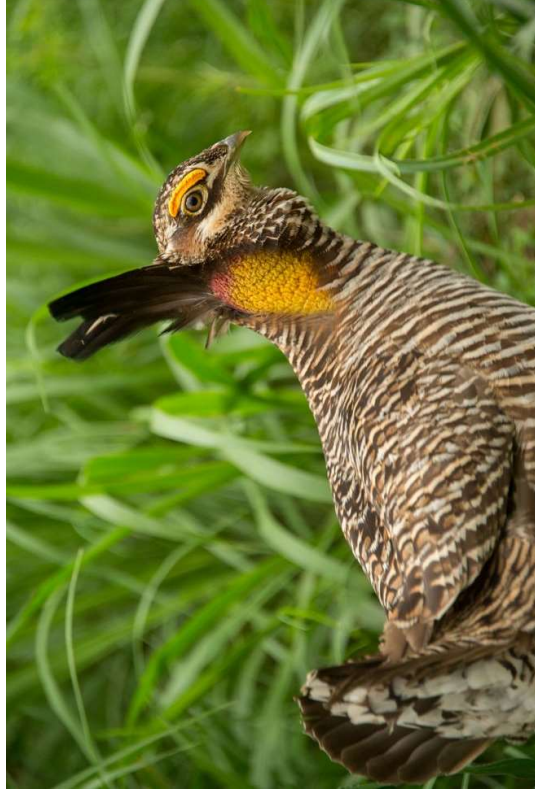
Making connections to DNR and regions

Adopt a wildlife area
PPP

Prairie Chickens

Equip

Pollinators etc



WISCONSIN PARTNERS 10/25/22

Planning for 2023 meetings, topics and strategies

Housing - into action

Book club or articles and topic discussions around 'connection'

DEI - splintering 'us':

Draining the Pool Politics (book)

Dreamland (book) opioid epidemic & the community pool closure

Lack of community; opposite of addiction is connection

Starting soccer in a football town

- We are from Pelican
- <https://www.youtube.com/watch?v=illrVN0IGhc>
- Wait for episode 4 - important!

MONROE CLIMATE CHANGE TASK FORCE

November - [Savanna Institute](#)
feature

Agroforestry

Non-profit

Podcast and Blog: Perennial AF



07
December

Perennial Farm Gathering 2022

- Date December 7, 2022 - December 9, 2022
- Time 8:30 am - 5:30 pm
- Venue Online
- Website [View Events Website](#)

[More Info](#)

PERENNIAL FARM GATHERING
December 7th-9th, 2022

3 DAY VIRTUAL GATHERING
of farmers, landowners and perennial
enthusiasts from across the country.

MONROE CLIMATE CHANGE TASK FORCE

Buyouts continue and decisions about open space created

Monitoring and Alert installations continue

Looking for opportunities and partners...

<https://climate.state.mn.us/minnesotas-climate-action-framework>

Next meeting January 4, 2023

The framework is organized around six goals

1. **Clean transportation:** Connect and serve all people through a safe, equitable, and sustainable transportation system.
2. **Climate-smart natural and working lands:** Enhance climate benefits by absorbing and storing carbon, reducing emissions, and sustaining resilient landscapes.
3. **Resilient communities:** Provide each Minnesota community with tools to plan for and become resilient to its unique climate impacts.
4. **Clean energy and efficient buildings:** Expand the use of carbon-free energy and create healthy, comfortable buildings that are cheaper to operate and pollute less.
5. **Healthy lives and communities:** Protect the health and wellbeing of all Minnesotans in the face of climate change.
6. **Clean economy:** Build a thriving carbon-neutral economy that produces goods and services with environmental benefit and equitably provides family-sustaining job opportunities.

WEBSITE UPDATES & NEWS

Continue to watch the website for updates and new or seasonal information

Other Promotions [ideas]:

- Job postings we are aware of with partners
- Events promotions for partners
- Newsletters
- Re-Design Partner links [page]
- [more]

Next slides have statistics...

Traffic Overview

Last 30 days (Oct 6 - Today) compared to previous period (Sep 6 - Oct 5, 2022)

Site sessions **14** ↓ 46%

Unique visitors **13** ↓ 43%

Avg. session duration **7m 10s** ↑ 174%



Sessions by traffic source

Traffic Source	Sessions	% Change
Google	6	↓ 50%
Direct	6	↓ 45%
servewisconsin.wi.gov	2	↑ 100%
Bing	0	↓ 100%
wivoad.communityos.org	0	↓ 100%

See full report

Avg. sessions by day

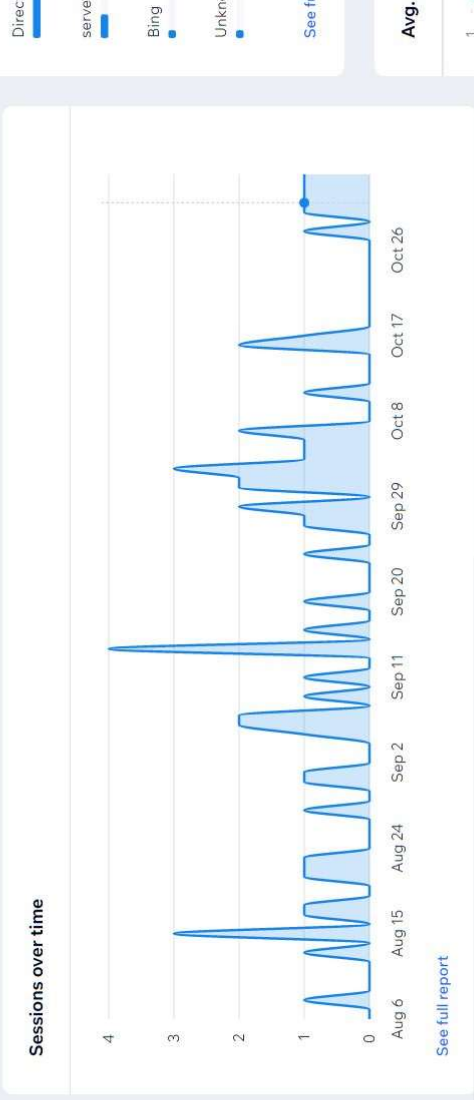
Traffic Overview

Last 90 days (Aug 7 - Today) compared to previous period (May 9 - Aug 6, 2022)

Site sessions
53 ↓ 27%

Unique visitors
45 ↓ 15%

Avg. session duration
3m 19s ↓ 23%



- Home
- Activity
- Subscriptions
- Contacts
- Communications
- Automations
- Marketing & SEO
- Analytics & Reports
 - Traffic Overview
 - Sales Overview
 - Behavior Overview
 - Reports
 - Insights
 - Benchmarks
 - Site Speed
 - Uptime & Security
 - Alerts
 - Email Updates
 - Finances

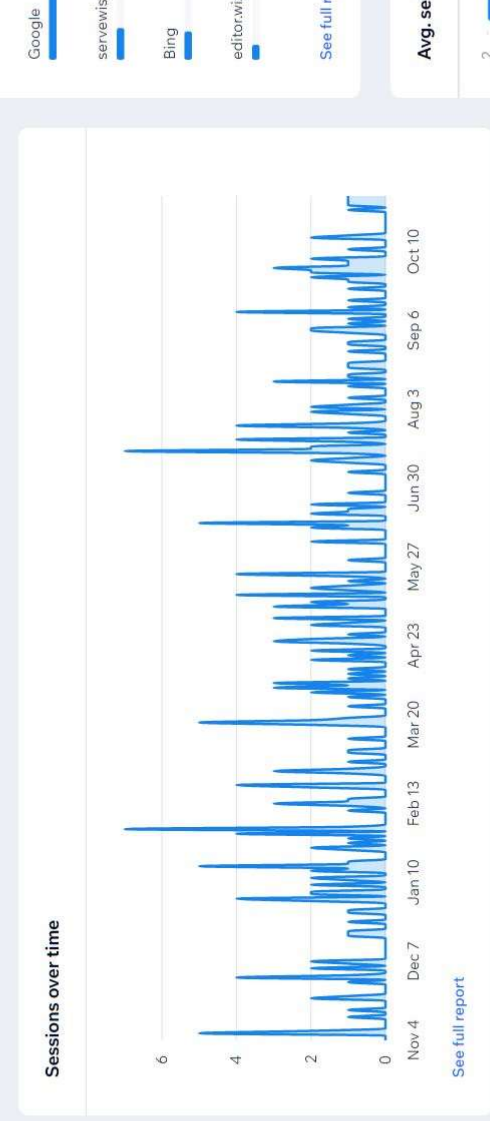
Traffic Overview

Last 365 days (Nov 5, 2021 - Today) compared to previous period (Nov 5, 2020 - Nov 4, 2021)

Site sessions **261** ↓ 54%

Unique visitors **165** ↓ 59%

Avg. session duration **6m 13s** ↑ 36%



Sessions by traffic source

Direct	↓ 62%	98
Google	↑ 2%	98
senewisconsin.wigov		19
Bing	↓ 29%	17
editor.wix.com	↑ 13%	9

See full report

Avg. sessions by day

2

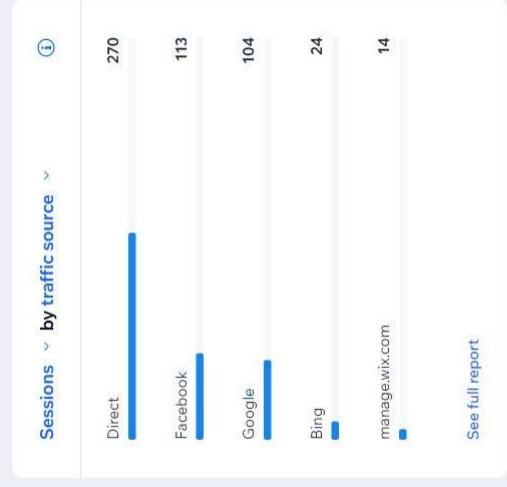
Traffic Overview

Previous year (Jan 1 - Dec 31, 2021) compared to previous period (Jan 2 - Dec 31, 2020)

Site sessions **560** ↑ 199%

Unique visitors **372** ↑ 153%

Avg. session duration **4m 32s** ↓ 37%



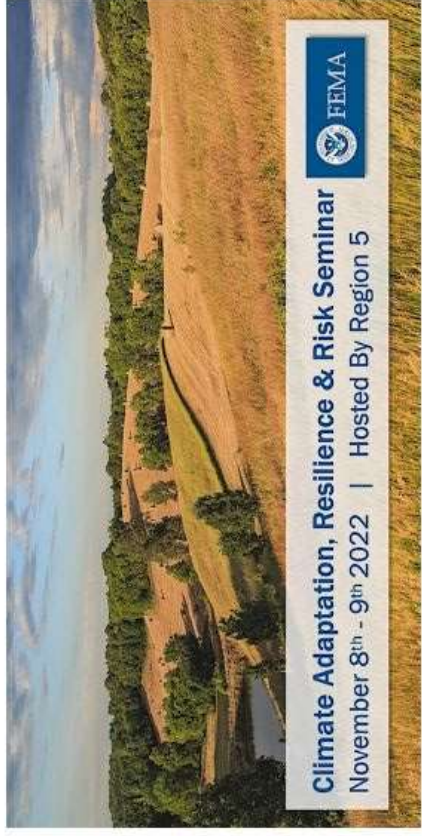
Avg. sessions by day

5

FEMA REGION 5

WEM & R2RDR

FEMA Region 5 Climate Adaptation, Resilience & Risk Seminar

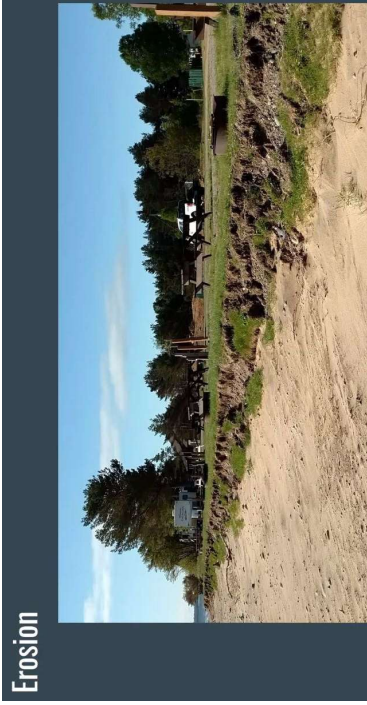


FEMA REGION 5 - MULTI-STATES & TRIBAL NATIONS

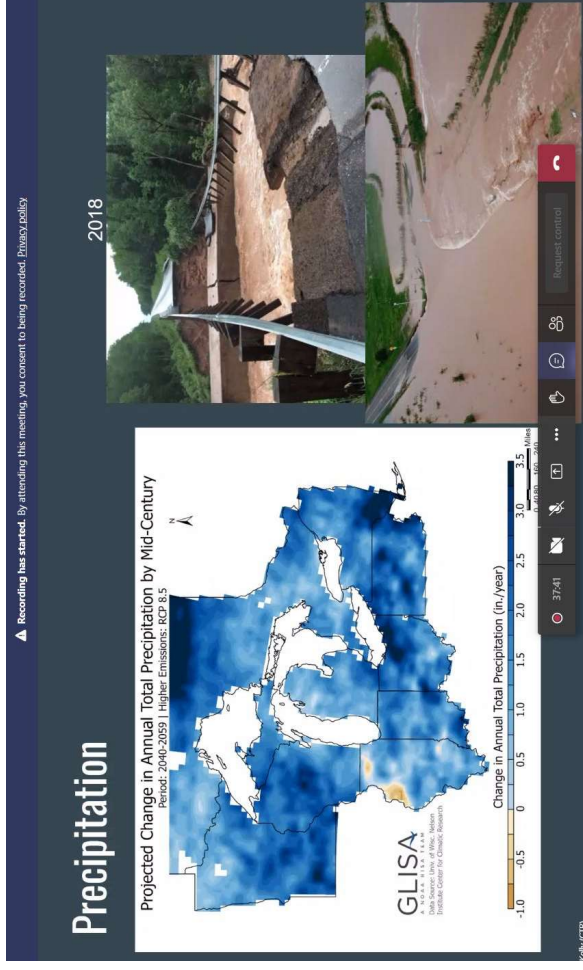
Climate Adaptation, Risk & Resilience = focus

Virtual or In-Person in Chicago

Pre-event survey on climate adaptation readiness and implementation (subjective)



Tribal Nations working with Baker Tilly to create tribal utilities - working on solar and storage, etc. (like VCED??)



RETHINKING: RESOURCES => RELATIVES

Vulnerability Assessments

- Vulnerability Assessment Purpose: ID key beings/species and their vulnerability to climate change
- Identify categories
 - Ex. Culturally significant species, air quality, health, forestry, wetlands, etc.
- Identify experts and data needed
 - Community members, elders, scientists, etc.
- Influences adaptation and hazard mitigation plans

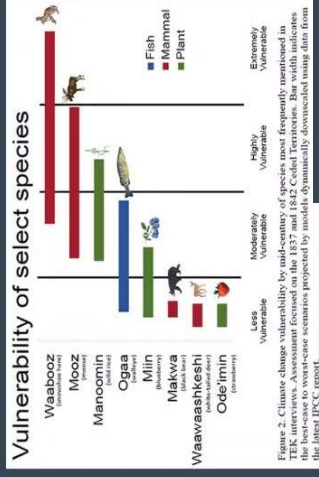


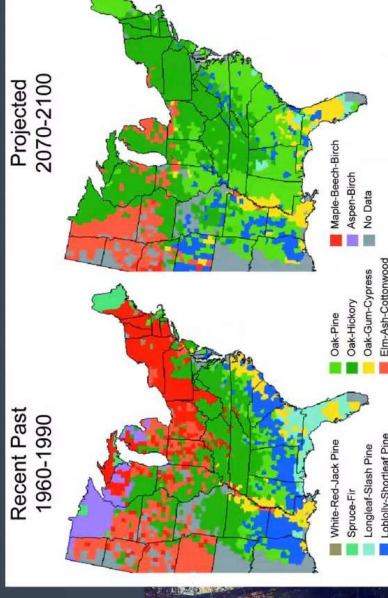
Figure 2. Climate change vulnerability by mid-century of species most frequently mentioned in the oral history of the Anishinaabe. The bar chart shows the vulnerability of species in the forest to worst-case scenarios projected by models, dynamically downscaled using data from the latest IPCC report.

Forests

Species	Less Vulnerable	Moderately Vulnerable	Highly Vulnerable	Extremely Vulnerable
Maple-Beech-Birch	Low	Low	High	High
Aspen-Birch	Low	Low	High	High
White-Red-Jack Pine	Low	Low	High	High
Spruce-Fir	Low	Low	High	High
Longleaf-Slash Pine	Low	Low	High	High
Loblolly-Shortleaf Pine	Low	Low	High	High
Oak-Pine	Low	Low	High	High
Oak-Hickory	Low	Low	High	High
Oak-Gum-Cypress	Low	Low	High	High
Elm-Ash-Cottonwood	Low	Low	High	High



<https://www.icrn.us/>



The maps show current and projected forest types. Major changes are projected for many regions. For example, in the Northeast, under a mid-range warming scenario, the currently dominant maple-beech-birch forest type is projected to be

46:40

Request control

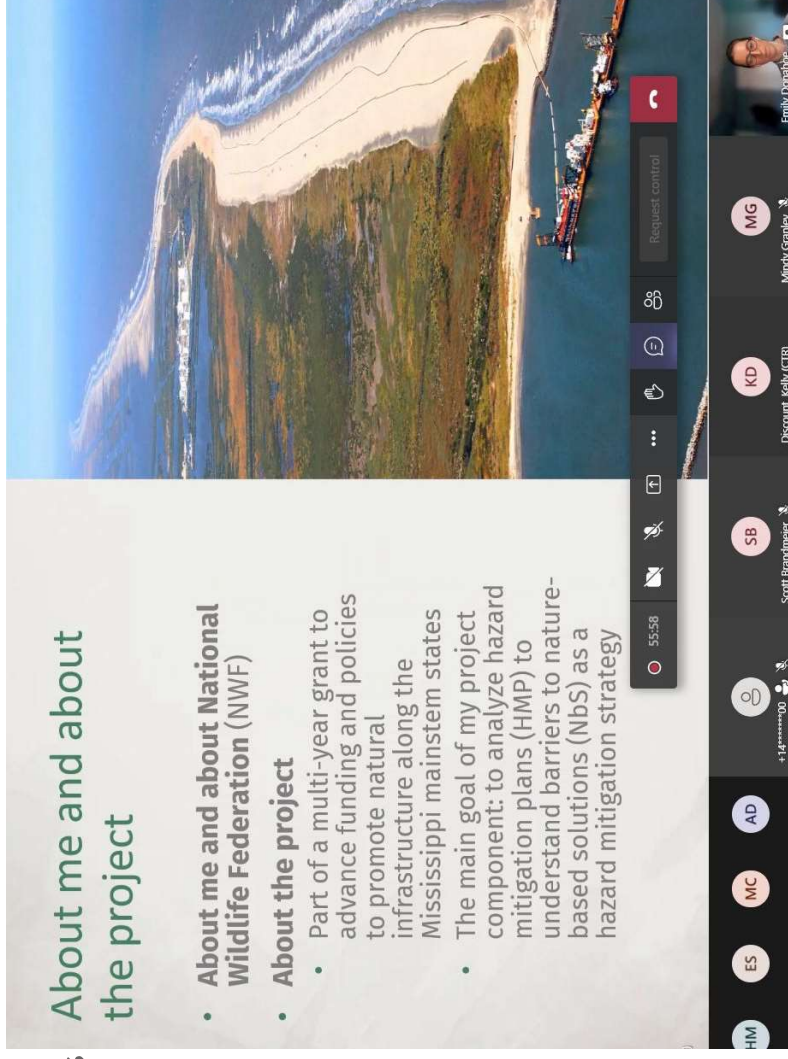
NATIONAL WILDLIFE FEDERATION - PROJECT ON MISSISSIPPI

<https://nwf.org/>

Importance of incorporating
Indigenous knowledge into projects

“Nature-Based Solutions”

- There are many different terms for nature-based solutions
- The IUCN definition: actions to protect, sustainably manage and restore natural and modified ecosystems in ways that address societal challenges effectively and adaptively, to provide both human well-being and biodiversity benefits
- **Despite the renewed focus on the protective powers of nature, these “strategies” have been used and advocated by Indigenous Peoples and marginalized communities for centuries**

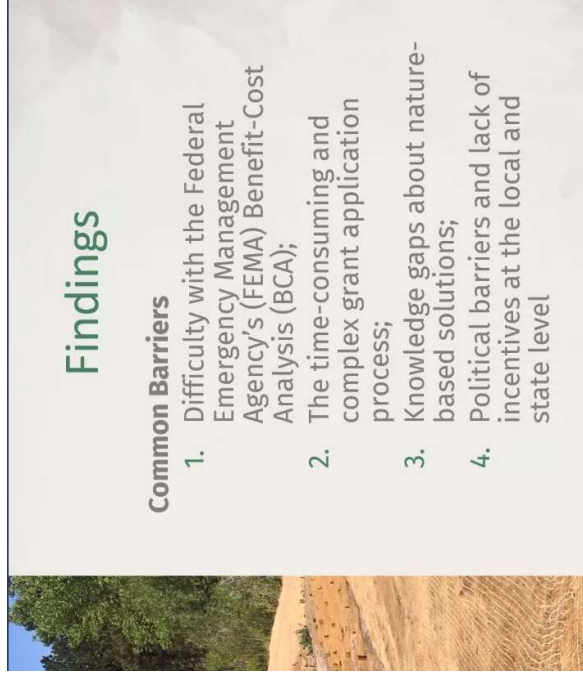


About me and about the project

- **About me and about National Wildlife Federation (NWF)**
- **About the project**
 - Part of a multi-year grant to advance funding and policies to promote natural infrastructure along the Mississippi mainstem states
 - The main goal of my project component: to analyze hazard mitigation plans (HMP) to understand barriers to nature-based solutions (Nbs) as a hazard mitigation strategy

The slide is part of a Zoom meeting. The top of the slide features a landscape image of a river delta. The bottom of the slide shows the Zoom interface with a toolbar containing icons for mute, video, chat, share, and call. The meeting ID is +14*****00. The meeting name is 'Empty Database'. The participants list includes HM, ES, MC, AD, SB, KD, MG, and Mindy Granley. The time is 55:58.

Place-based infrastructure knowledge/access to nature-based solutions



Staffing turnover = challenge

Lack of planning for long-term (future) in place

Looking into the future...

Opportunities:

1. Influx of funding through the Bipartisan Infrastructure Law (BIL) and the Inflation Reduction Act (IRA)
2. 7 out of 10 Mississippi River mainstem states are renewing their State HMP in 2023, as well as many Tribal Nations
3. Increased FEMA funding and technical assistance
4. Coming soon: NWF's Guidebook / Funding Database

SARA SMITH - ICRN.ORG

BRIC and BCA

Community-based decision-making

Invasive species => non-local beings

Cattails vs. Wild Rice

Co-Benefits

THANK YOU! 😊

Please reach out!

My Contact Information:

Emily Donahoe (they | them | theirs)
Policy Specialist for Resilient Coasts and Floodplains
National Wildlife Federation
National Advocacy Center, Washington, D.C.
(202) 797-6824
donahoe@nwf.org



Climate Migration Briefing

Local considerations and preparations in the City of Duluth, MN

Region 5 Climate Adaptation Seminar

November 8-9, 2022

Mindy Granley

mgranley@duluthmn.gov

Typology

Vulnerable cities

will suffer population losses as a result of climate change



Recipient cities

may be unsuspecting, unwilling, and unprepared to receive migrants following a rapid onset event



Climate destinations

have manageable climate impacts, access to fresh water, embrace sustainable development, affordable housing, infrastructural capacity, a desire to grow and be welcoming



Marandi, A., & Main, K. L. (2021). Vulnerability to climate migration impacts in US cities. *Journal of Environmental & Development*, 30(1), 550-558. <https://doi.org/10.1016/j.jedev.2011.09.004>

©2021

FAQs

<p>Is Duluth immune to climate change?</p> <p>Duluth is not a magical "climate haven"; we will have our share of climate issues to deal with too.</p> <p>We already deal with precipitation pattern changes, more extreme coastal storms, impacts to our natural resources and infrastructure, warming winters, and air quality issues from regional/national wildfires</p> <p>E.g. 2012 flood, 2018 storms, Emerald Ash Borer, BWCA fires</p>	<p>How many people will move to Duluth due to climate?</p> <p>Precise migration numbers and patterns are unpredictable</p> <p>Anecdotal stories tell us multiple Duluth residents moved here due to climate concerns</p> <p>Census data: 432 new residents in 2020</p>	<p>Is Lake Superior at risk of exportation?</p> <p>Lake Superior water is protected as part of the International Joint Commission's agreement, so water cannot be exported from the Great Lakes</p> <p>This may increase migration to the Great Lakes region.</p>
---	---	--

"The city has a **housing crisis**. Aging housing stock. Rents are higher than they should be for a city in [the] Midwest. Migrants are likely to be affluent and are more able to pay higher housing costs. This will increase housing costs."

"The city was built in size for [approximately] 100,000 people. Streets and transportation **infrastructure is sized for that**. Also, we have sized water delivery **for more people**. A lot of assets that we need to keep taking care of [and] making sure they will last for storms."

"[We] already have a community that isn't working for everyone. Unless there is great intentionality in the way we handle growth, it could make problems so much worse. We already have **educational, economic, environmental, health, and housing disparities**. Have to figure those issues out for the people we have before we add climate migrants/refugees."

The Potential Social, Environmental, and Economic Impacts on Duluth, Minnesota as a Climate Refuge, May 2022, UMD Labovitz School of Business and Economics Bureau of Business and Economic Research



What can the City do?



- **Mitigate and decarbonize**
 - Climate Action Work Plan
 - Climate Emergency Declaration
 - ImagineDuluth 2035
 - Cities Race to Zero

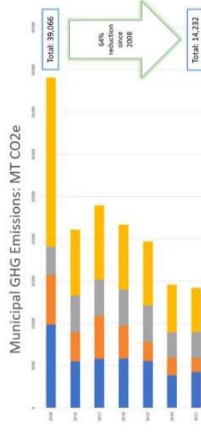
- **Adapt and increase resilience**

- Infrastructure
- Housing and affordability
- Neighborhood resiliency

Carbon

Reduction Goals

Reducing GHG emissions is a key mitigation strategy, and one Duluth has aggressively pursued, contributing to its being highlighted as an emerging “green” city.



- 2017: Mayor Larson announced **We're Still In** goal (80% by 2050)

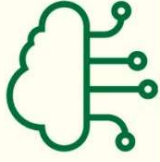
- 2021: City Council passed a **resolution declaring a climate emergency**

- 2022: Mayor Larson joined **Cities Race to Zero**, pledging **net neutrality by 2050** and interim goal of a 50% reduction by 2030

Building Resilience

Infrastructure Upgrades

to better capture stormwater and hold against floods, storms, and snow



Increase Reliable Housing Stock

and heating capacities for cold winters and weather events (as of 2020, 43.2% of Duluth housing stock was built before 1940, compared to 12.6% nationally)



Create and Maintain Healthy Neighborhoods

with access to affordable housing, transport, and healthcare during climate events, a population influx, and beyond



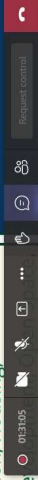
Climate Action Workplan

- Adopted in February 2022 to **help the City strategically move forward with sustainability initiatives** and meet climate goals
- Created in response to the City's Climate Emergency Declaration
- The **City Sustainability Advisory Team (C-SAT)** integrated components of the **Duluth Citizen's Climate Action Plan** and **Imagine Duluth 2035**
- **Imagine Duluth 2035**: comprehensive plan update includes Energy & Conservation, Housing, Transportation, Economic Development



City of Duluth

Climate Action Work Plan 2022 - 2027



Resilient Infrastructure

Green infrastructure: planning and projects



Minnesota Pollution Control Agency
Stormwater Resiliency Planning Grant

- An assessment to identify infrastructure vulnerabilities city-wide
- An in-depth study of the 32nd Avenue West Creek watershed

Great Lakes Sediment and Nutrient Reduction Program: implementation of green infrastructure in Irving Park/Keane Creek

USACE: Miller Creek green infrastructure
TBD

Lincoln Park: Park restoration with biofiltration basins, and native plantings to replace retaining wall

Resilient Infrastructure

Other Infrastructure

- Streets
- Parks
- Solar + storage



Work has been completed on a record number of street miles, Parks, the downtown thermal district, and planning is underway for renewable energy + energy storage opportunities.

Two grants awarded in past month:

- Renewables Accelerating Community Energy Resiliency (Dept of Energy RACER)
- Rebuilding American Infrastructure with Sustainability and Equity (RAISE) for West Superior Street (USDOT)

Pending:

- Dept of Energy Community Geothermal Heating and Cooling – West Superior Street

Resilient Housing

- Nearly 75% of Duluth's housing units are at least 46 years old. 44% are >76 years
- 2020 Data:**
 - Median Household Income: \$52,463
 - Median sale price of single-family home: \$205,000
 - Average Rent:
 - \$722 (studio)
 - \$779 (1 bedroom)
 - \$954 (2 bedroom)
 - \$1,250 (3 bedroom)
 - \$1,502 (4 bedroom)

- City investment of American Rescue Plan funding (\$19M for affordable housing)
- American Council for an Energy-Efficient Economy: grant for a Rental Energy Equity study
- Prioritized recommendations for City action



Resilient Neighborhoods

- Love Your Block
 - Cities of Service Love Your Block grant **builds relationships between residents and the City** to improve neighborhoods
 - Year 1: Love Your Block project leaders, community partners, and donors have **invested more than \$18,000 across thirteen project sites** in Lincoln Park and Central Hillside



- Green Infrastructure Code Audit grant
- Department of Energy Communities LEAP Grant
 - Local Energy Action Planning**
 - Goal:** create a community energy transition plan to build a healthier, more equitable, and sustainable future
 - LNKPK 156**, will plan to improve the neighborhood's housing and the commercial district by **transitioning buildings from fossil fuels to electricity, supporting the port, and making the Lincoln Park**

ce hub

Resilient Housing

Using Trust Fund to build Duluth Homeowner @ Rental Rehab loans



- Housing Trust Fund- City of Duluth and LISC funding assistance for infill and restoration, removal of blight.
 - City investment of \$4M
 - Annual levy support ~\$250,000
 - LISC has fundraised roughly \$9M
- Rebuild Duluth – Private development of innovatively designed, affordable, new housing on vacant infill housing lots in Duluth.
 - Many were smaller infill lots, 25'.
 - Selected projects receive vacant land for free.
- Homeowner and Rental Property loans
 - City + Duluth HRA – qualified homeowners and landlords provided no interest loans for property renovation

ADOPT-A-HIGHWAY

Requires Application

Potential waiting period

Investment in signs & safety

Long-term commitment

Abandon segment request = end

Alternatives:

Monroe County Landfill roads

Goals:

- Roadside cleanup
- Safety
- Garbage, recycling, etc. removal for beautification

STATE INCIDENT MANAGEMENT TEAMS UPDATE

Chris Hohol PSC-2 - Planning Section Chief
Aaron Young, PSC-3 ICT 3 - Wisconsin DNR

Current as of: November, 7th 2022

WISCONSIN DEPARTMENT OF NATURAL RESOURCES
WISCONSIN INCIDENT MANAGEMENT TEAM
WISCONSIN DEPARTMENT OF MILITARY AFFAIRS
WISCONSIN DEPARTMENT OF TRANSPORTATION
WISCONSIN DEPARTMENT OF TRANSPORTATION HAZARD MANAGEMENT TEAM

Using PC Mic and Speakers

16:18

Request control

Olson-McDonald, Lisa - DMA

Russ (Chippewa Co EM...)

Cokerham, Brian - D...

Maria Nelson

MN

BC

+10

Meeting chat

Russ (Chippewa Co EM...): FYL... I can barely hear the introductions

That's cool how the camera can panoramic the room and see everyone.

Type a new message



Agency IMTs

- ▶ DATCP – Type 4 (within Jurisdictional scope of DATCP)
- ▶ DOC- Type 4 (within walls of DOC, not all facilities have an IMT)
- ▶ DNR – Three Type 3 (Wildland Focused, some Natural Disaster (Dam / Flood or special request)
- ▶ State Patrol (reconstituting Type 4 mostly mobile field force support)
- ▶ State All Hazard Team (Multi- Agency, DMA is Host Coordinating Entity) Type - 3



Local IMT – Type 4 / 5

- ▶ Northeast – Not yet established
- ▶ East Central – MABAS 112 Brown Cty. host Entity
- ▶ Southeast – Old UASI / Waukesha Cty host entity
- ▶ Southwest – Multi-county agreement – Dane Cty. is coordination entity

IMT CAPABILITY IN WISCONSIN

Using PC/Mic and Speakers



- Rostered groups of ICS-qualified personnel
 - Consisting of an Incident Commander, other incident leadership, and personnel qualified for other key ICS positions
- Exist at local, regional, state, tribal, and national levels
- Have formal notification, deployment, and operational procedures
- Teams are typed based on team members' qualifications
- Manage incidents or supporting incidents Using PC/Mic and Speakers tasks or functions.

INCIDENT MANAGEMENT TEAMS – (IMT)

ICS – Incident Command System
IMT – Incident Management Team



Emergency Management Performance Grant, IMTs and NQS

The NQS Implementation Objectives reflect the concepts and principles contained in NQS doctrine and aim to promote consistency in NQS implementation nationwide.

- The NQS Implementation Objectives provides guidance for implementation in the 2021 Emergency Management Performance Grant (EMPG) Notice of Funding Opportunity.
- EMPG Program recipients are strongly encouraged to implement components of the NQS and may use their EMPG Program funds to support NQS implementation efforts.
- Beginning in Fiscal Year 2022, FEMA intends to make the implementation of NQS a requirement of award for EMPG Program funding.
- In a phased approach over three years, EMPG recipients should achieve or work toward achieving each of the objectives listed in this document to be considered NQS compliant.

The screenshot shows the FEMA website interface. At the top, there is a navigation bar with the FEMA logo and the text "Disasters & Assistance", "Grants", "Floods & Maps", "Emergency Management", "About", and "Work With Us". Below the navigation bar is a search bar and a utility bar with links for "Prepare for Disasters", "Get Flood Insurance", "Apply for Assistance", and "Check Application". The main content area features a breadcrumb trail: "National Incident Management System" > "Components - Guidance and Tools" > "NQS Supplemental Documents". The page title is "National Qualification System Supplemental Documents". Below the title, there is a section titled "Supporting documents on this page include:" followed by a list of three items:

- **The NIMS Guideline for the National Qualification System (NQS)**, which describes the components of a qualification and certification system, defines a process for certifying the qualifications of incident personnel, describes how to stand up and implement a peer review process, and provides an introduction to the process of credentialing personnel.
- **Two NIMS NQS Supplemental Guides** that provide processes, procedures, and tools to assist authorities having jurisdiction develop and maintain their qualification, certification, and credentialing programs.
- **The NIMS Guideline for Mutual Aid**, which provides an overview of common

MISSION

- Primary purpose of the DNR's teams are to provide support to type 3 wildfires within WI
- May also support:
 - All Hazard Natural Disasters (upon request/availability)
 - Governor declared emergencies
- Likely not available for planned events:
 - Sports events Using PC Mic and Speakers
 - Concerts
 - Certain All Hazard Events (Civil Unrest, HazMat Etc.)

IPP SURVEY QUESTIONS

- What are some barriers to preparedness for the community you represent? (Cost, knowledge, time, lack of information, etc.)
- How does the community you represent learn best? Printed articles, Video, small group, large groups, interactive training
- What are some barriers to preparedness for the department you represent?
- List areas where you feel our community is strong when it comes to emergency preparedness.
- List areas where you think our community can be improved when it comes to emergency preparedness.

Using PC Mic and Speakers

SUGGESTIONS FOR PROFESSIONAL SURVEYS

1. In your professional or volunteer capacity, have you had to respond to or assist in recovery from a disaster? [Yes / No]
If you answered "no," please skip to question 6.
2. If you answered "yes," please indicate your role:
 - Immediate response
 - Post-disaster recovery
 - Both response and recovery

MORE SLIDES ON THE SURVEYS AND IPP

<https://wem.wi.gov/beoc-public-private-partnerships/>

https://forms.office.com/Pages/ResponsePage.aspx?id=l8S2jexsskSLpR1z0H5m_2jvkcjSLIdInUjqeKyixDRUQ1hJNFNFUES2SziwQ09IOFBTNlJSVUNYSS4u&wdLOR=0FEB17D9-0E05-0047-8571-EC99F0BD43B

E application to WI-BEOC (WEM based)

<https://www.wivoad.org/about-us/>



About Us	How to Help	Events	Resource Library	COADs
Current Members	Volunteer	Response Information		Manitowoc County
Committees	Donate	News		Brown County VOAD
Long Term Recovery Groups				Southeast COAD
Leadership				
National VOAD				

WI-VOAD/COAD - OFFICIAL MEMBERSHIP



Sponsored by National VOAD Partner

Windows taskbar: 31°F Cloudy, 1:08 PM 11/16/2022

Windows Start Menu: Search, + ABOUT SERVE WISCONSIN

Taskbar icons: OneDrive, Edge, Chrome, File Explorer, Mail, Calendar, Photos, Settings, Task View, Start Menu

Browser tabs: About Us | VC, VOAD / COAL, Wix Website E, Wix Home | Wix.co, Wix Weekly Time, R2RDR Q4 20, R2RDR, 2022 R2RDR, servewisconsin.wi.gov/voad-coad-support, Maps, Home | Wix.com, Scope - OneDrive

Browser address bar: <https://www.servewisconsin.wi.gov/voad-coad-support>

Page Content:

CURRENT STATUS / LISTING

REGIONAL VOAD/COAD COORDINATORS:

- NORTHWEST WISCONSIN - Northwest Wisconsin Public Health Readiness Consortium**
 - CONTACT - Aimee Wollman Nesseth
- WEST CENTRAL WISCONSIN - River 2 Ridge Disaster Resilience**
 - CONTACT - Jen Schmitz
- SOUTHWEST WISCONSIN - Winding Rivers UMC**
 - CONTACT - Deb Burkhalter
- NORTHEAST WISCONSIN - Operation Community Cares**
 - CONTACT - Will Nothing
 - CONTACT - Valerie George
- EAST CENTRAL WISCONSIN - Operation Community Cares**
 - CONTACT - Will Nothing
 - CONTACT - Valerie George
- SOUTHEAST WISCONSIN - Journey Disaster Response Team**
 - CONTACT - Jeff Berard
 - CONTACT - Tom Strenger

<https://www.servewisconsin.wi.gov/voad-coad-support>

Example Template:

My name is Name and I am Title/experience **working on** issue/topic.
This is an important issue because Impact/why it matters **We hope**
to Goals/plan of action Action item

Give it a try

AGU THRIVING EARTH
EXCHANGE

Blake McHughy
Jen Schmitz
Liz Crocker
Maria Sharova-Thrivin...
Gabriella Velardi-Ward
Sarah Stands
David Samples
Susan Liley Citizens' Com...
Craig Watts
Edda Mutter
Diane Henry
Charley Naney
Liamie Audette
Carla Marshall (ha)/Uh...
Carmen George
Amaris Alanis Ribeiro
Amaris Alanis Ri...
Doug Norsby
Jamie O'Neill
Carmen George
pam mitchell